

A person wearing a yellow button-down shirt over a white t-shirt is using a white handheld scanner to scan a blue elephant figurine. The figurine is placed on a wooden table. The background is a modern office or studio with blue lighting and various items on shelves.

# CR-Scan 01

Professional Performance

Consumer Price

64cm

时间：2021.4.15

## 1.1 CR-Scan 01 Advantage



Automatic matching  
No need to scan with markers



High precision up to 0.1mm



Directly export stl or obj with texture  
(Adapt to color 3D printer)



Multi Scanning modes



LED light source  
Low power consumption



Automatic data processing

## 1.2 CR-Scan 01 Main Features

### **01** One machine with dual functions, turntable, handheld mode

**Fully automatic in turntable mode,  
Free scanning in handheld mode**



Turntable mode: One-key automatic scanning, supporting multiple postures

Auto align, get a more complete model automatically

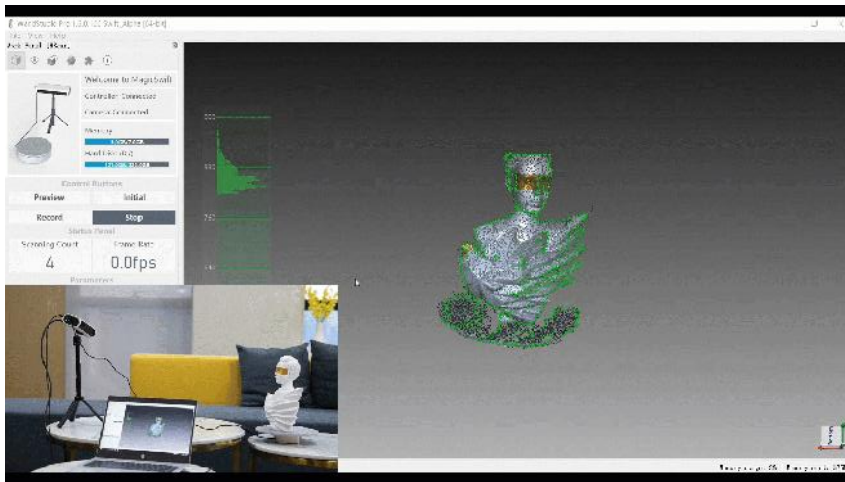
Handheld mode: Handheld scanning, more flexible, supports scanning objects of different sizes without marker

Scanning range (Handheld): 0.3M-2M

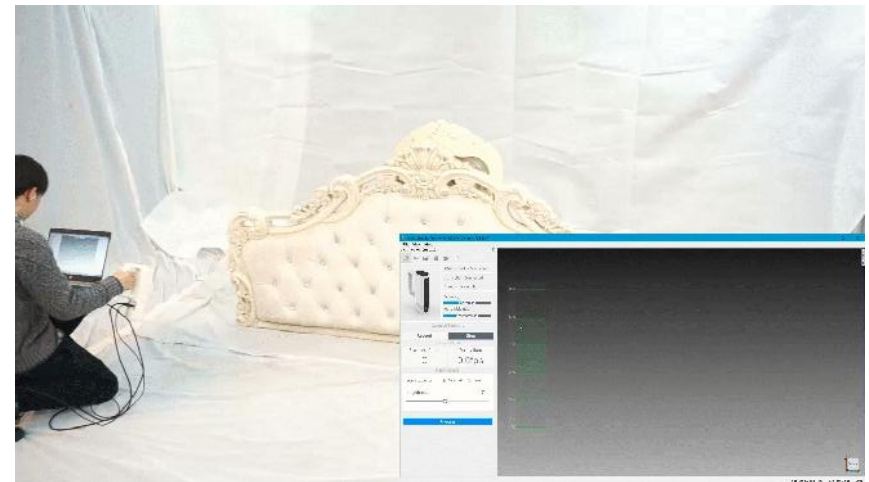
Scanning range (Turntable): 0.3M-0.5M

# CREALITY

## Applications



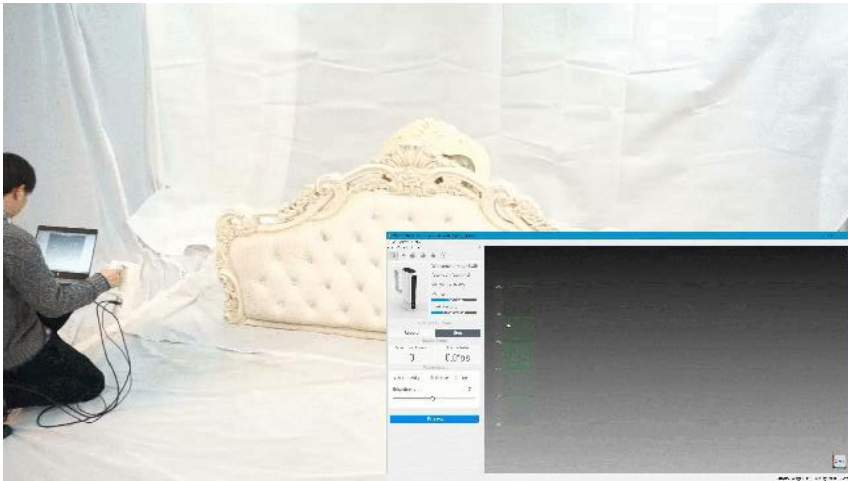
**Turntable Mode**



**Handheld Mode**

# CREALITY

## Automatic matching--No need to scan with markers

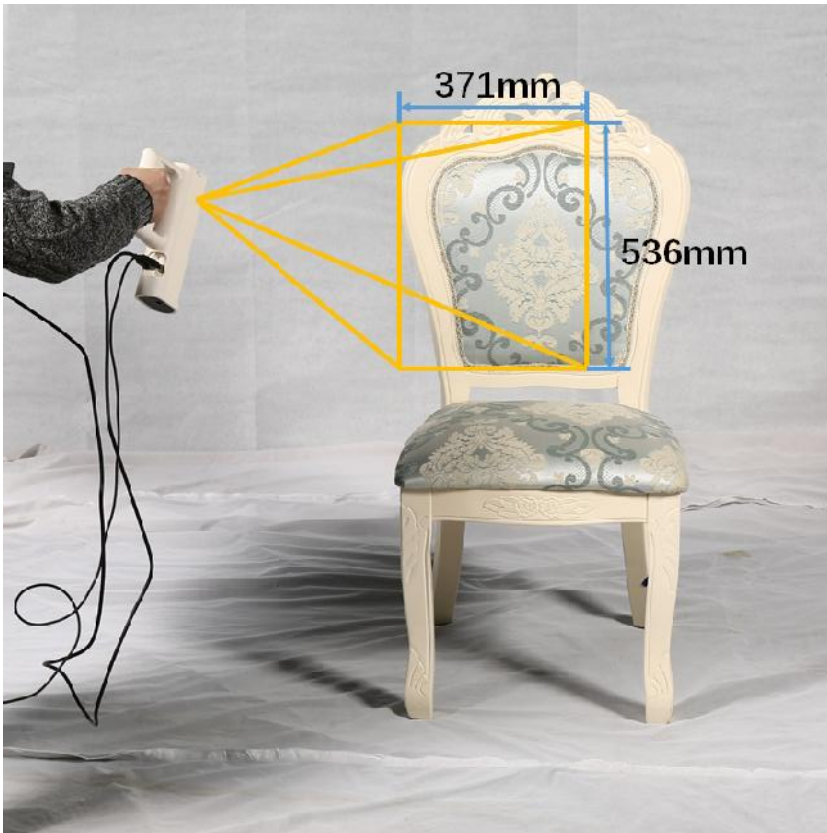


Quick start without marker



Scan for 10 seconds  
Mark and remove marker for 3 minutes

## 1.3 CR-Scan 01 Features



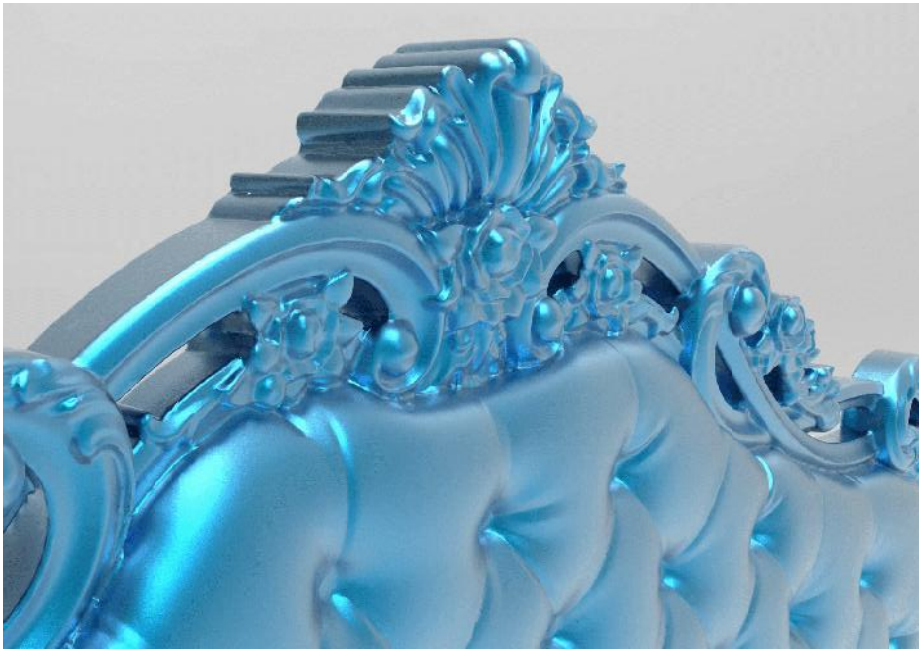
## 02 Super large Format

**Single frame size 500mm, fast scanning**

---

The single frame format is 1.5 times that of the traditional scanner, and the scanning is faster and smoother.

## 1.4 CR-Scan 01 Features



### 03 High Precision for Large Objects

**Big volume does not affect detail accuracy**

Scanning large objects also ensures high precision details

## 1.5 CR-Scan 01 Features



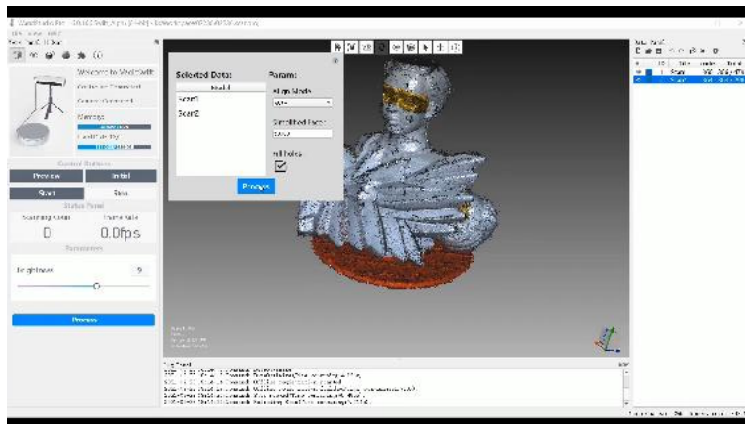
### 04 True Color

---

24-bit high-fidelity color restoration,  
perfect support for color 3D printing



## 1.5 CR-Scan 01 Features



## 05 One-key processing, Fully automatically

After the scan is completed, the model data can be processed with one key, and the result model can be obtained directly without operation.

## 1.6 CR-Scan 01 parameters



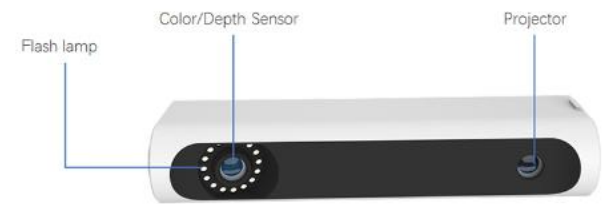
G.W	1910g
Packing Size	350*305*125mm
Frame Rate	10fps
Scanning area	536×378mm
Accuracy	0.1mm
Resolution	0.5mm
Scanning distance	400mm–900mm
Scanning Range(Handheld)	0.3m–2m
Scanning Range(Turntable)	0.3m–0.5m
Output Format	obj、stl
Data Interface	USB3.0

# CREALITY

## 1.7 CR-Scan 01(Upgrade Kit) Packing List



### DEVICE UNBOXING



Host \*1



Tripod \*1



Turntable \*1



Turntable panel \*1



Power Cord \*1



Turntable Control Cable \*1



Data Cable \*1



8G USB Drive \*1

## 2.1 Industry Application

### Application:

Creator, Education,  
Consumer goods

Manufacturing, Furniture

Computer Graphics,  
Digital Protection

Art and architecture,  
virtual reality, etc.



## 2.1 Application

### Creative product design

#### CR-Scan 01 Advantage:

Directly scan 3D models with one click, and complete the model in 5-10 minutes. And the scanning has a fast scanning, accurate model size, fast production and high-precision restoration.

#### Other competitors :

Designing through traditional 3D modeling software is technically difficult for users, and it take about 1-2 weeks for complex model.

